

# X Series 16:9 Ratio

16 X 9 ASPECT RATIO HD DIRECT VIEW LED WALLS



2020 ATS-PROFESSIONAL X SERIES LED 16:9 RATIO

X SERIES LED 16X9 ASPECT RATIO

# Advanced Design

## The finest built Direct View LED Wall Systems

For more than 15 years the staff at ATS-Professional has designed and built some of the most iconic indoor LED systems throughout the world with Pixel ranges from .83mm to 4mm in all sorts of sizes and shapes.

ATS-Professional is a direct designer and importer of OEM LED Panel designs. Our LED products are manufactured for ATS by some of the largest LED factories in the world.

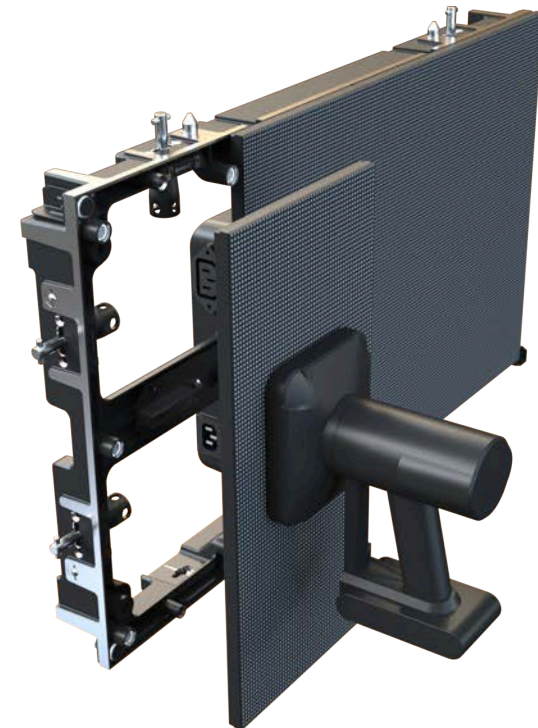
We choose OEM factories based on the requirements of the project and each factory's unique capabilities to provide the finest solution for our customers based on our Engineering Build Requirements and Design.

With decades of experience dealing in OEM manufacturing and our Un-matched internal Design and Engineering, ATS-Professional introduces our newest and most advanced line of indoor LED systems.

Every facet of the Design has been meticulously thought out. Mechanical Design, Visual Electronics, Installation, Reliability, Service and Support, Multiple Resolutions and Media Playback Systems to fit any budget.

We are very proud of latest versions of our Direct View LED Wall Systems for 2020.

2020 ATS-PROFESSIONAL X SERIES LED 16:9 RATIO

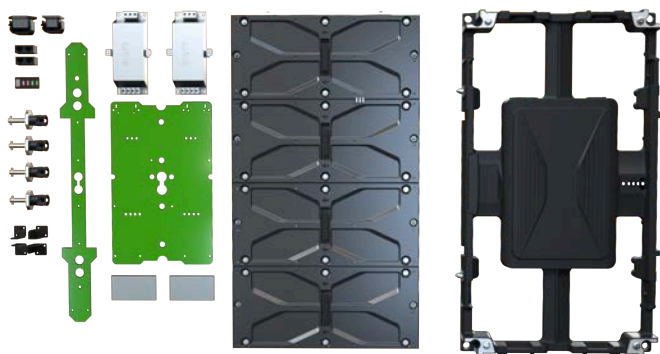


X SERIES LED 16X9 ASPECT RATIO

# Features

## Exceptional Engineering

The X series is 16:9 visual scale, they can be widely used in various occasions, the 720P\1080P\2160P\3840P high-definition and ultra-high definition all are available. HUB board and power supply can be removed as you remove those two modules against them.



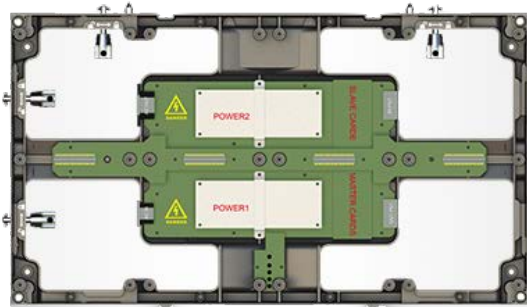
## Front Maintenance

Electric vacuum pressure tool dismantling one LED module just needs 3 seconds.



## Dual Power Supply

Dual redundant power supplies in each panel. If one power supply fails, the other can ensure normal working of panel. Two RV cards in each panel. If one RV card fails, the other can ensure normal working of panel. Two RV cards are synchronously working for backup function.



## Easy Connections

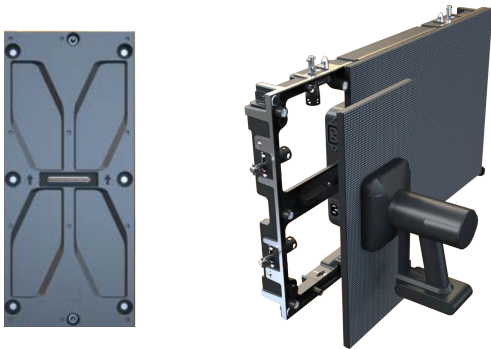
Hand twist connectors and positioning pins as standard for attaching one panel to another with perfect alignment.



# Features continued

## Advanced Hardware - Hard Pin Connectors

The front service LED Modules themselves have done away with failure prone ribbon connectors and have instead used hard wired multiple pin connectors inserted right onto the PCB board. Along with Magnets that help hold the panel in place, this design enables perfect alignment between LED Modules and quicker installation.



## Advanced Hardware - Corner Protection

With high resolution panels the corners are very prone to damage while moving and assembling panels. Built-in corner protection guard against this damage.



## Sprolink Video Processors

Sprolink Video Processors enable multiple inputs, windows and layers, PIP Format Conversion and Scaling to all LED walls from 1080P up to 8K. Most LED Suppliers never think to add these important components, leaving their customers with an incomplete solution for most of their uses.

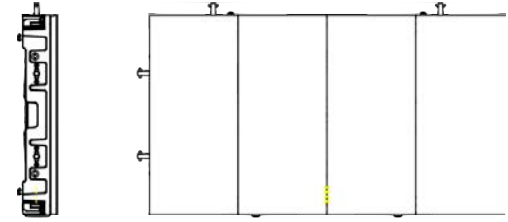


## Novastar LED Processors and Graphics Cards

Novastar, is a global leading LED display solution provider, designing and developing LED display control solutions for a variety of market applications including entertainment, digital signage and rental.



# Specifications



Specifications	X 1.2	X 1.5	X 1.8	X 2.5
<b>Pixel Pitch (mm)</b>	1.25	1.56	1.87	2.5
<b>LED Type</b>	SMD1010 NationStar Gold Wire black lamps, SMD11010 NationStar Copper Wire black lamps, Wire black lamps - IC MBI5254	SMD1010 NationStar Gold Wire black lamps, SMD11010 NationStar Copper Wire black lamps, Wire black lamps - IC MBI5254	SMD1010 NationStar Gold Wire black lamps, SMD11010 NationStar Copper Wire black lamps, Wire black lamps - IC MBI5353	SMD2020 NationStar Gold Wire black lamps, SMD2020 NationStar Copper Wire black lamps, Wire black lamps - IC MBI5353
<b>Cabinet Size (WxHxD) mm</b>	600 * 337.5 * 60	600 * 337.5 * 60	600 * 337.5 * 60	600 * 337.5 * 60
<b>Panel Weight (KG)</b>	6.9 KG	6.9 KG	6.9 KG	6.9 KG
<b>Module size(mm)</b>	150 * 337.5	150 * 337.5	150 * 337.5	150 * 337.5
<b>Panel Resolution</b>	480*270	384*216	380*180	240*135
<b>Module Connector</b>	Hard Pin Connector, no ribbon cable eliminates 75% of LED wiring failures.	Hard Pin Connector, no ribbon cable eliminates 75% of LED wiring failures.	Hard Pin Connector, no ribbon cable eliminates 75% of LED wiring failures.	Hard Pin Connector, no ribbon cable eliminates 75% of LED wiring failures.
<b>Certificates</b>	EMC Class A, Safety 60950-1	EMC Class A, Safety 60950-1	EMC Class A, Safety 60950-1	EMC Class A, Safety 60950-1
<b>Input voltage ( V, Hz)</b>	100v-240v	100v-240v	100v-240v	100v-240v
<b>Viewing Angle (H/V) (°)</b>	any degree from 0-90	any degree from 0-90	any degree from 0-90	any degree from 0-90
<b>Brightness</b>	600/1200 peak	600/1200 peak	≥1000	≥1000
<b>Refresh Rate</b>	≥3840 Hz	≥3840 Hz	≥3840 Hz	≥3840 Hz
<b>Bit</b>	14 bit	14 bit	13 bit	13 bit

Specifications subject to change. Please contact ATS-Professional for updated Specifications